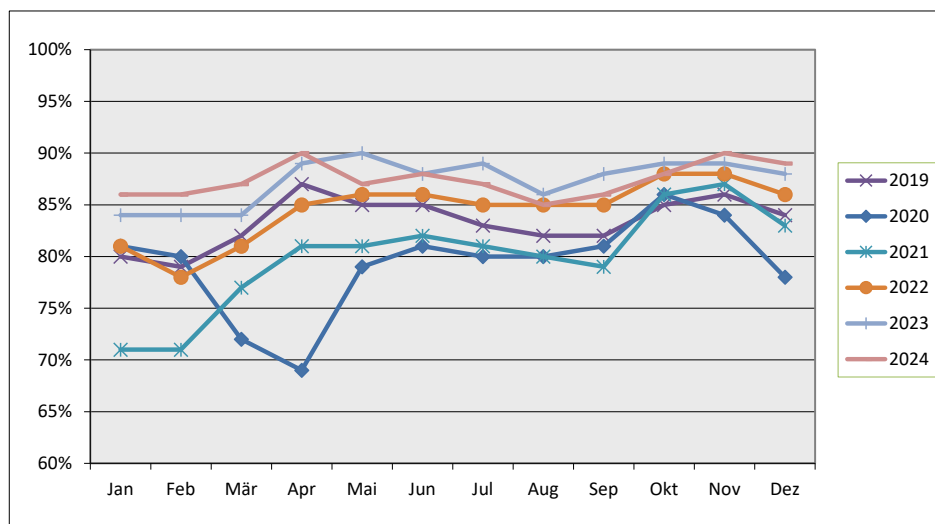




Werkstattauslastung

	Jan	Feb	Mär	Apr	Mai	Jun	Jul	Aug	Sep	Okt	Nov	Dez
2019	80%	79%	82%	87%	85%	85%	83%	82%	82%	85%	86%	84%
2020	81%	80%	72%	69%	79%	81%	80%	80%	81%	86%	84%	78%
2021	71%	71%	77%	81%	81%	82%	81%	80%	79%	86%	87%	83%
2022	81%	78%	81%	85%	86%	86%	85%	85%	85%	88%	88%	86%
2023	84%	84%	84%	89%	90%	88%	89%	86%	88%	89%	89%	88%
2024	86%	86%	87%	90%	87%	88%	87%	85%	86%	88%	90%	89%



durchschnittliche Prozentzahlen

	Jan	Jan-Feb	Jan-Mär	Jan-Apr	Jan-Mai	Jan-Jun	Jan-Jul	Jan-Aug	Jan-Sep	Jan-Okt	Jan-Nov	Jan-Dez
2019	71%	71%	73%	75%	76%	77%	78%	78%	78%	79%	80%	80%
2020	81%	81%	78%	76%	76%	77%	77%	78%	78%	79%	79%	79%
2021	71%	71%	73%	75%	76%	77%	78%	78%	78%	79%	80%	80%
2022	81%	80%	80%	81%	82%	83%	83%	83%	84%	84%	84%	85%
2023	84%	84%	84%	85%	86%	87%	87%	87%	87%	87%	87%	87%
2024	86%	86%	86%	87%	87%	87%	87%	87%	87%	87%	87%	87%